



**ELITE GRAPHIX**

...leading by example

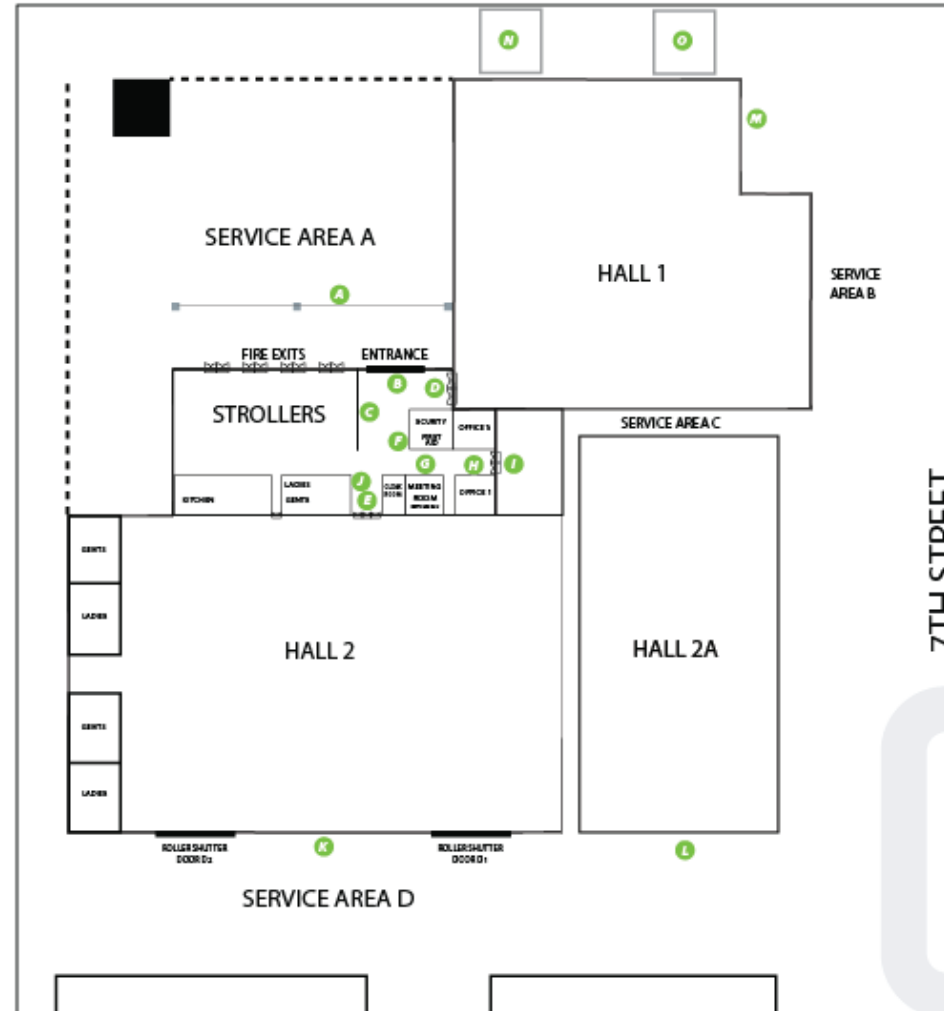
*Exhibitions & Venue Signage*



***Venue Signage and Branding***

# Venue, Hall & Layout Map

## Branding Areas



**ELITE GRAPHIX**

... leading by example

Exhibitions & Venue Signage



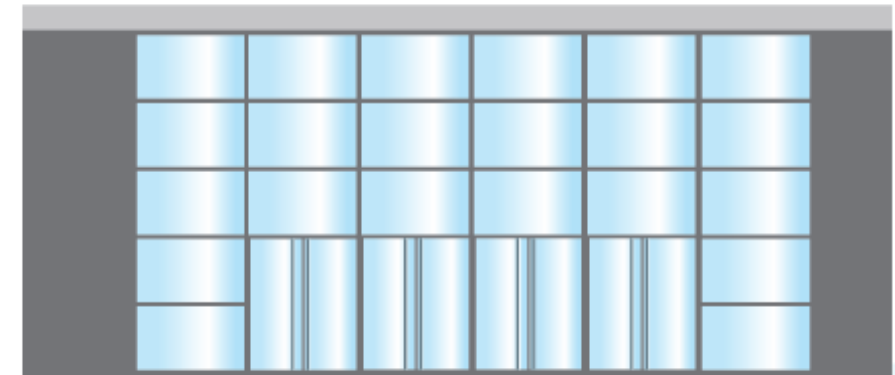
# Front of the Venue Signage

Mesh Banners Only



## Contravision Prints

Contravision window vinyls,  
1 row of 4, upto 3 rows of 4.  
Mesh Banners only as a wind  
trap.  
Full colour PVC banners are  
**NOT** suitable for this area.



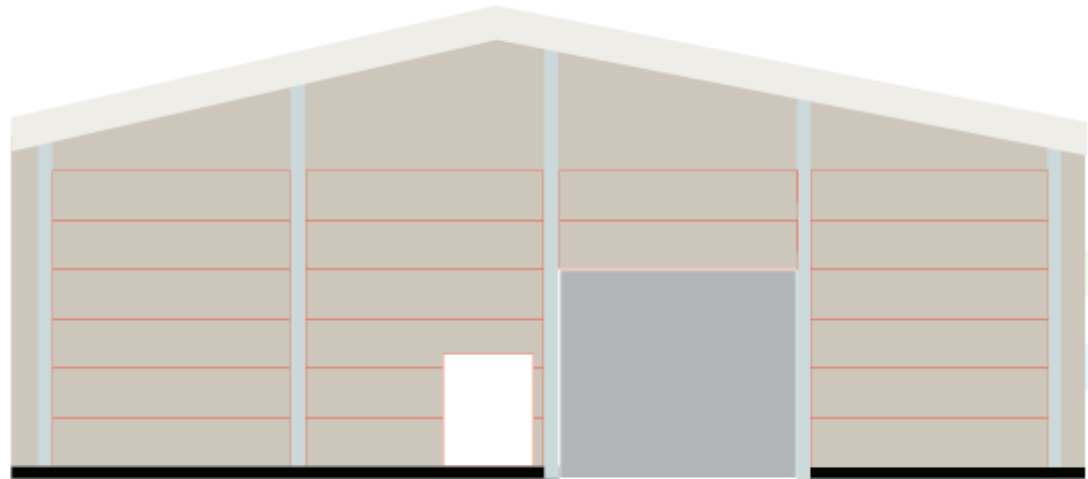
Full colour printed light boxes  
both sides of the main road as  
you come into the Park



**ELITE GRAPHIX**  
... leading by example  
Exhibitions & Venue Signage



# Hall 2A Signage on the Venue



These are full colour printed temporary large low tack vinyl stickers on each section of the new hall



**ELITE GRAPHIX**

... leading by example

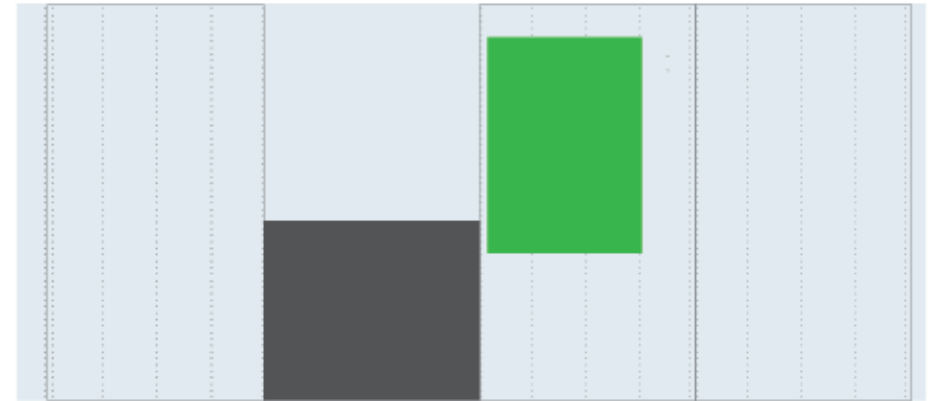
Exhibitions & Venue Signage



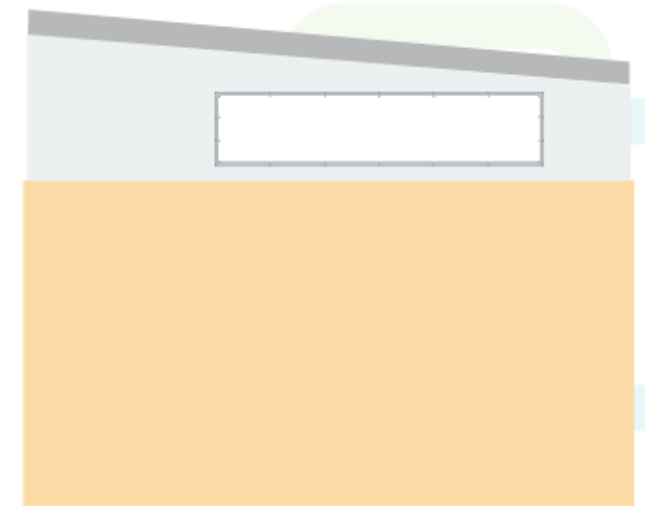


# Venue Hall Signage

*Service Entrance D giant banners*



*Hall 1 Corner Venue signage*



Full colour printed Mesh banner signage  
to the high level structure of the halls



**ELITE GRAPHIX**

... leading by example

Exhibitions & Venue Signage



# Pillar Signage of the Venue

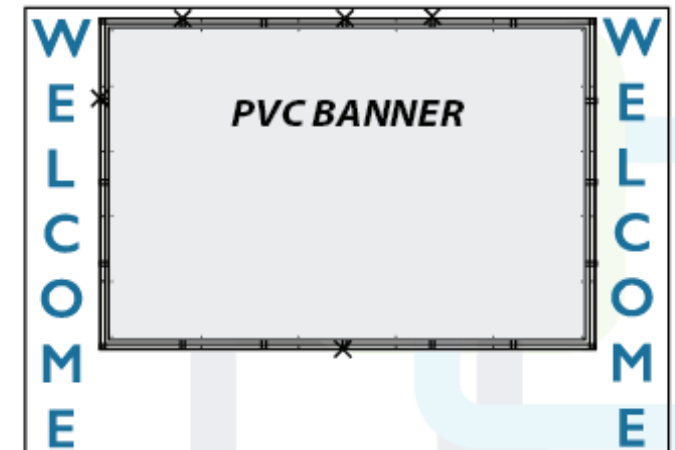


## 4x Small High Level Signage Areas



Full colour printed banner signage on  
to the high level structure on all 3 sides  
2x structures 4x Small sides 2x large sides

## 2x Large High Level Signage Areas



**ELITE GRAPHIX**

... leading by example

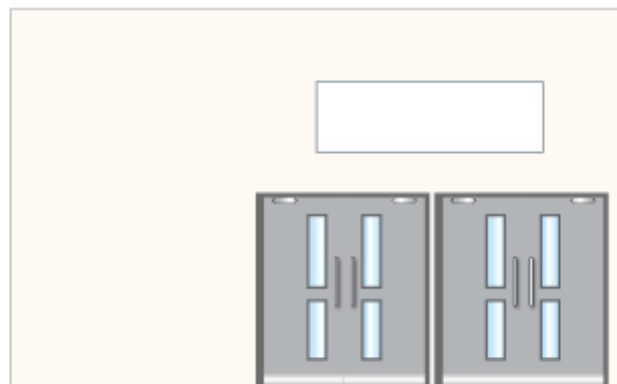
Exhibitions & Venue Signage



# Inside Hall 1 & 2 Door Signage



## Hall 1



These are full colour printed foamex panels to slide inside a Ali trim frame.



Full colour printed PVC banners fitted to the strollers area frame work. Also hall hanging banners from the roof beams

## Hall 2






# Custom Stand Build & Storage




We can take your ideas and turn them into your custom built stand to exhibit your products.

From the ground upwards we will take care of your floor, stand, graphics, furniture and lights, we just need 3 things from you: Budget, size and your theme, and we will do the rest. 

**NOTE:** All the graphics on both types of stand are your property afterwards, to take and use or Elite will store at a cost for the year. 3 show per year FREE storage for the year.



If your starting out in the show world and funds are tight for the first show then maybe try the gantry stand, banners and counter. Nice simple looking stand with maximum brand exposure with a open feel for your customers 



**ELITE GRAPHIX**

... leading by example

Exhibitions & Venue Signage



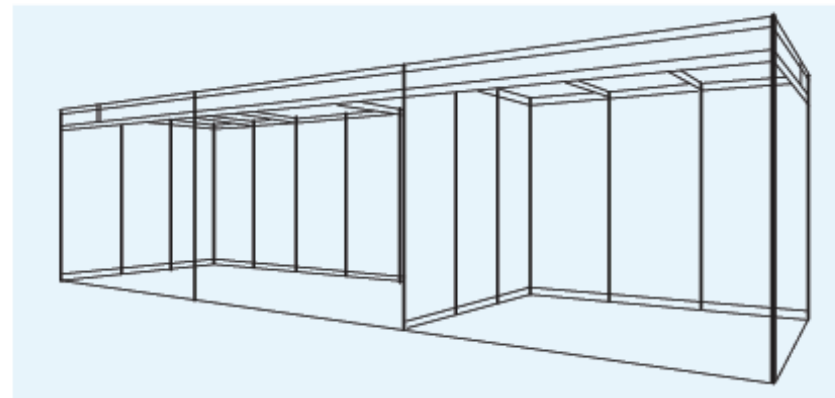


# Shell Scheme Stands



Full colour printed foamex panels can make your stand brighter when you have not got a large budget for your stand. You have a few options for graphic arrangements

1. Panels inserts like the top 2 pictures
2. Seamless looking panels as the bottom picture
3. PVC banner drops easy to take away



Counters, Shelving and other stand extras are also available, so please ask when you enquire about your stand requirements.



**ELITE GRAPHIX**

... leading by example

Exhibitions & Venue Signage



# Flags & Poster Signage



## SNAP FRAME POSTERS

These frames can be found dotted all around the venue halls and offices to be widely available for organisers

Sizes are:

A0, A1, A2, A3, & A4

**IMPORTANT**

Full colour printed posters need to be set up print ready.



Feather Flags



Tear Drop Flags

## FLAGS

With both styles of flags you get an option of bases and sizes. The weighted water base, tyre clamp support and ground spike comes **FREE**

Sizes are as follows:

**2.8m, 3.4m, 4.5m & 5.6m**

**IMPORTANT**

As the nature of flag production with stitching and manufacturing, lead times are 5-8 working days



**ELITE GRAPHIX**

... leading by example

Exhibitions & Venue Signage



# POS Units & Various Signage



Other requirement for the organisers or exhibitors such as display systems. These are good to be used for show plans, sponsors brands and advertising on the stands and the gang ways or main receptions.

Directional signs for the venue road ways can be sorted as well 4' x 2' timber signs.



# Artwork & Design Specs

**PC** or **Apple Mac** generated files must be supplied, if your design team are creating your artwork as follows:



1. All fonts created to outlines to save font issues
2. All files to be supplied as hi res pdf's preferred
3. If other programs must be sent then CS6 or below must be down saved as we don't want cloud virus issues
4. Sizes will be given from Elite so scale to be 25%
5. Images must be hi res or originals to keep quality
6. Logos must be VECTORED files the original logo
7. Corporate font to be supplied if different to our library

Elitegraphix offers a Design service in house as well, so you need the show branding designed, we have all the sizes, so thats half the time. We offer stand designs as also here at Stoneleigh.





**ELITE GRAPHIX**

... leading by example

*Exhibitions & Venue Signage*

Jason Chappell, Exhibition Stands & Signage Manager  
To discuss your requirements please contact

T: 02476 604 759   [jason@elitegraphix.co.uk](mailto:jason@elitegraphix.co.uk)  
Elitgraphix Ltd, Stoneleigh Park, Kenilworth,

Contact the NAEC Stoneleigh Sales & Marketing  
Team by emailing them on:

[talk-to-us@stoneleighevents.com](mailto:talk-to-us@stoneleighevents.com) T: 02476 696 9669  
Grandstand Stoneleigh Events Ltd, Stoneleigh Park, Kenilworth,



***Venue Signage and Branding***